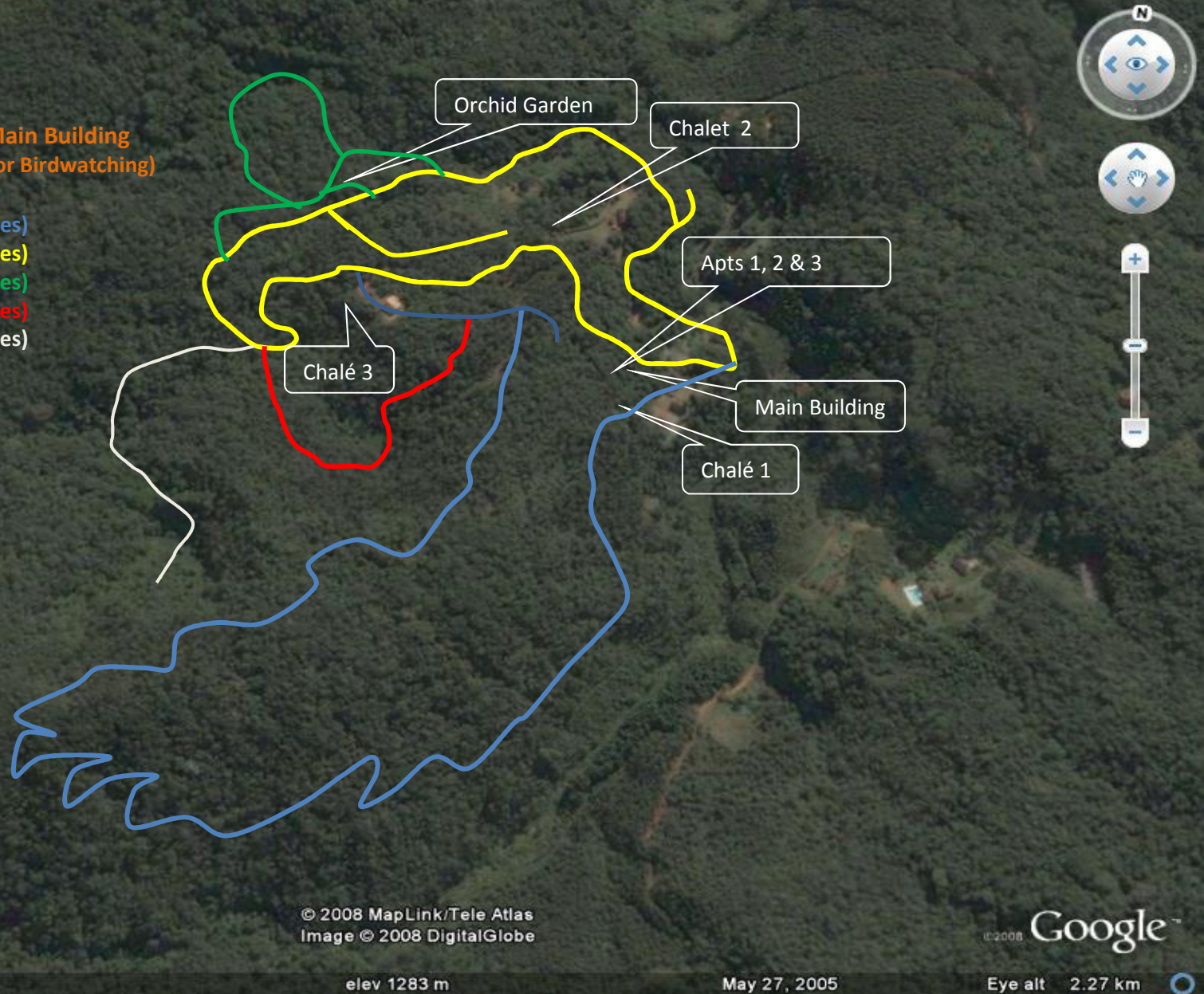


Trails at Itororó Eco Lodge



Trail times starting from the Main Building
(Please, calculate 3 times more for Birdwatching)

- Blue Trail (90 minutes)
- Yellow Trail (35 minutes)
- Green Trail (45 minutes)
- Red Trail (35 minutes)
- White Trail (35 minutes)



© 2008 MapLink/Tele Atlas
Image © 2008 DigitalGlobe

© 2008 Google™

22°18'41.22" S 42°29'55.05" W

elev 1283 m

May 27, 2005

Eye alt 2.27 km